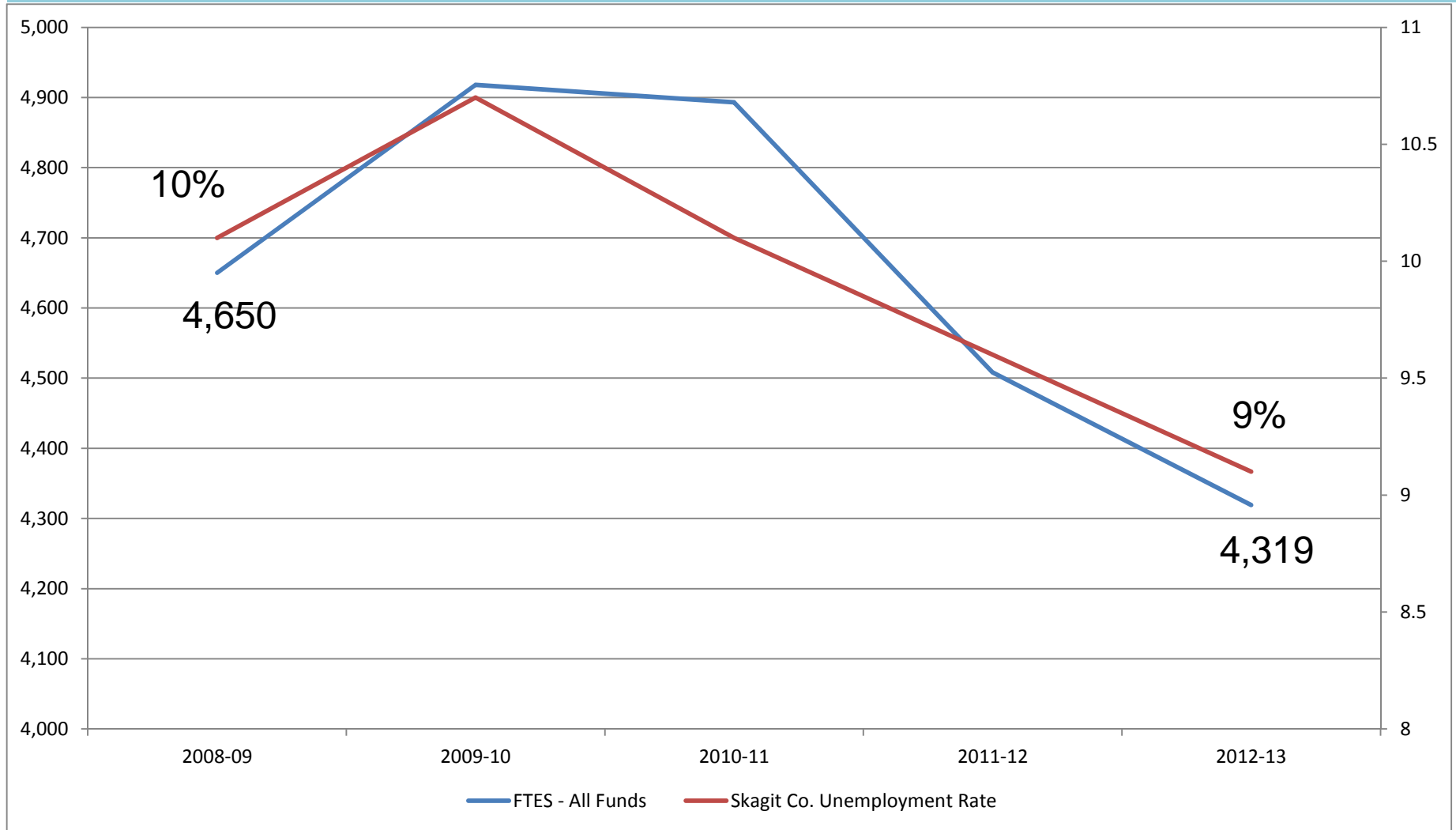


**Skagit Valley
College
Board of Trustees
Board Progress Report
Core Theme -- Access**

October 8, 2013

Unemployment Rates and FTEs



SVC enrollment continues to mirror fluctuation in the Skagit County unemployment rate.

Core Theme - Access

Objective 1:

The College will meet or exceed Strategic Enrollment Management Targets (SEM)

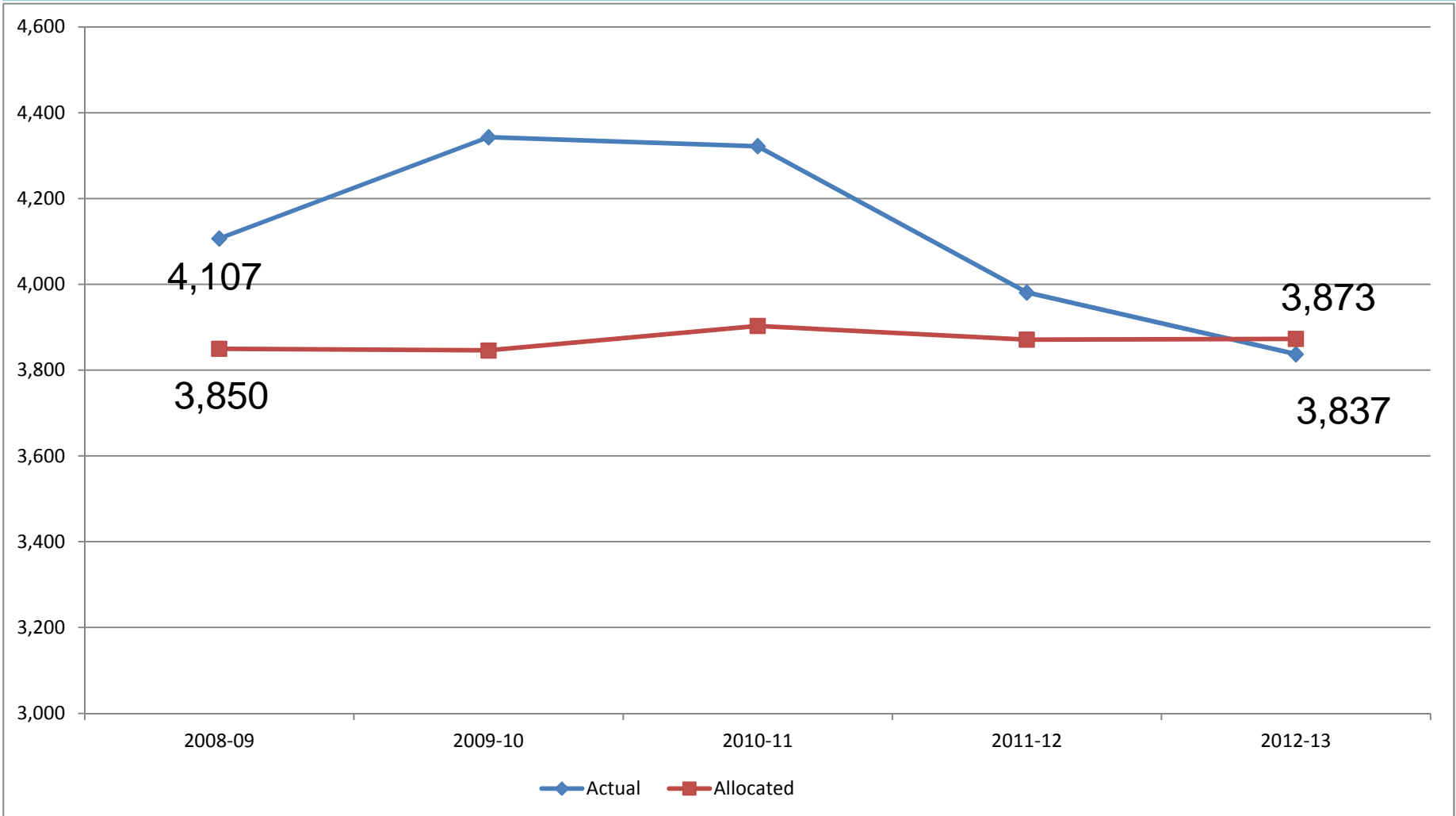
Indicators:

1. Actual State FTEs compared to State FTEs Allocation
2. International FTEs compared to actual
3. Running Start FTEs compared to actual

Threshold:

Meet or exceed State FTE Allocation and SEM targets

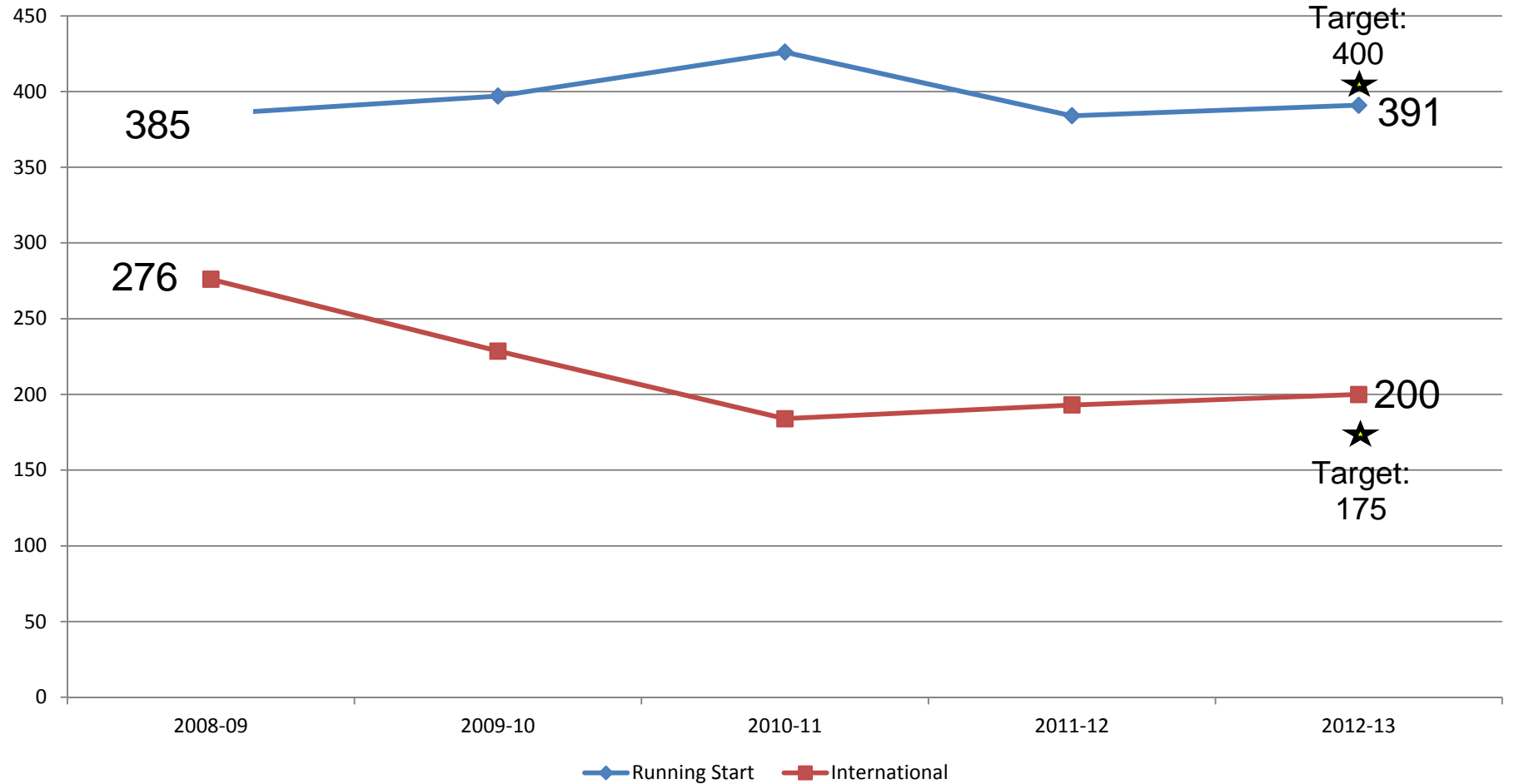
State Allocated & Actual FTEs



SVC missed the 2012-13 state-funded enrollment target by 36 FTEs.



Strategic Enrollments



SVC missed the Running Start target by 9 FTEs.

Target: 400 Actual: 391

SVC exceeded the International target by 25 FTEs.

Target: 175 Actual: 200



Core Theme - Access

Objective 2:

The College will meet or exceed the statewide participation rate

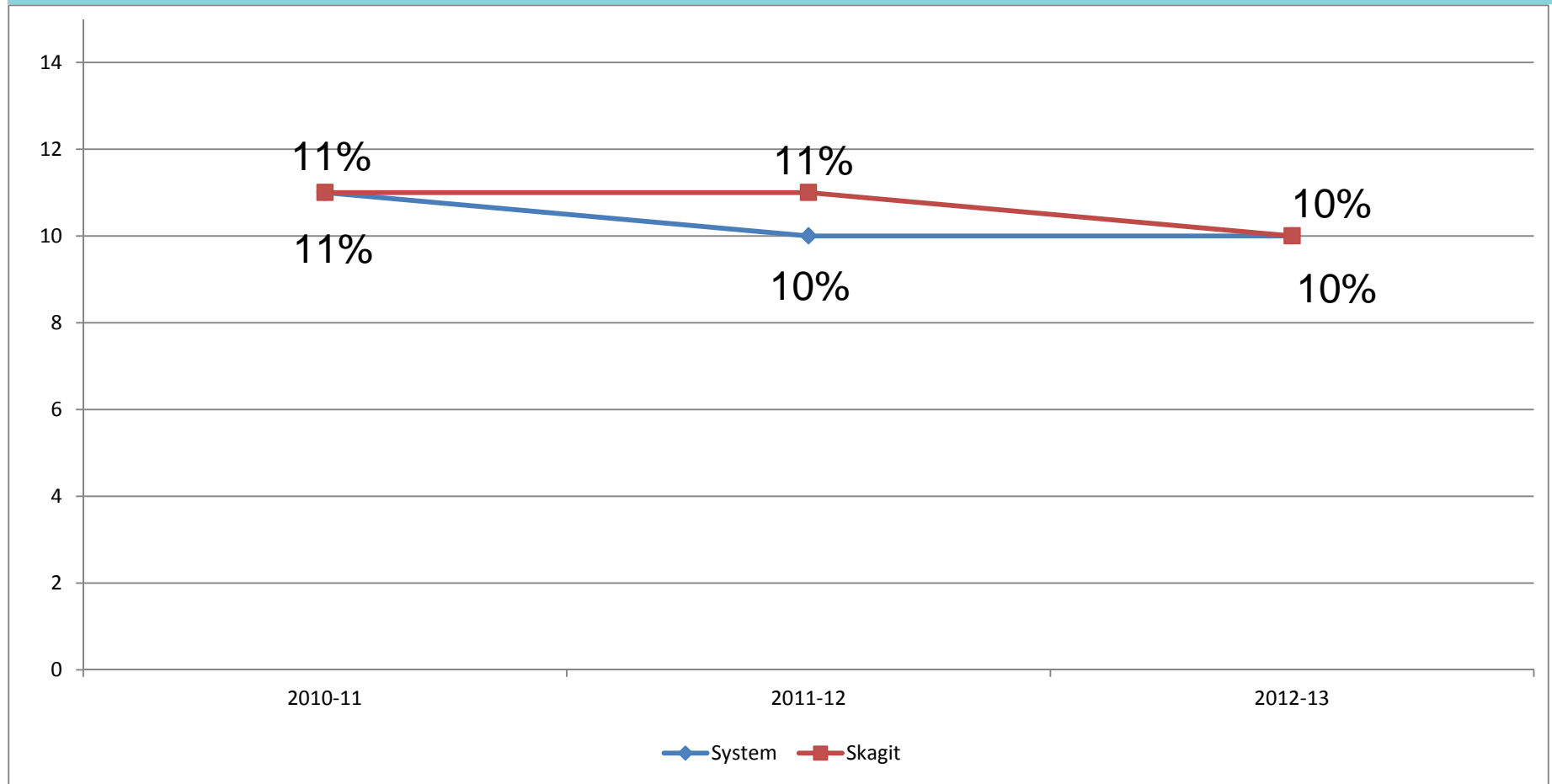
Indicator:

SVC District participation rate compared to the CTC system participation rate

Threshold:

Meet or exceed participation rate for the CTC system

Participation Rate 2010-11 to 2012-13



Participation Rate: The number of persons age 18-44 years enrolled as a percent of the relevant population

SVC had the same participation rate as the CTC system: 10%



Core Theme - Access

Objective 3:

The College enrollment will reflect district demographics

Indicators:

1. Enrollment distribution by race/ethnicity compared to district population
2. Enrollment in degree programs by race/ethnicity compared to district population

Threshold:

Parity between population and enrollment for student subpopulations

Hispanic Students Compared to District Population

	Headcount	Percent	2010 Population
Hispanic or Latino (Any Race)	1,596	19%	11%
Not Hispanic	6,926	81%	89%
Total	8,522	100%	127,650

SVC enrolled 8 percentage points more Hispanic or Latino students than the community's population of Hispanic or Latino residents.

These are adults ages 18 to 64 enrolled in 2012-13, excluding current Running Start students.



Non-Hispanic Students Compared to District Population

	Headcount	Percent	2010 Population
White	5,922	69%	81%
Asian/ Pacific Islander	383	5%	3%
African American	194	2%	1%
Native American	73	1%	1%
Multi-race/Other	305	4%	2%
Total	6,877	81%	89%

*49 not reported

These are adults ages 18 to 64 enrolled in 2012-13, excluding current Running Start and International students.

SVC Enrollments by Race Compared to District Population

	2010-11	2011-12	2012-13
Total			
Hispanic or Latino (Any Race)	17%	16%	19%
Not Hispanic	83%	84%	81%
Not Hispanic Breakdown			
White	72%	72%	69%
Asian/ Pacific Islander	4%	5%	5%
African American	2%	3%	2%
Native American	1%	1%	1%
Multi-race/Other	4%	3%	4%

Degree Seeking Hispanic Students Compared to District Population

	Headcount	Percent	2010 Population
Hispanic or Latino (Any Race)	729	13%	11%
Not Hispanic	5,047	87%	89%
Total	5,776	100%	127,650

SVC enrolled 2 percentage points more degree-seeking Hispanic or Latino students than the community's population of Hispanic or Latino residents.



Degree Seeking Non-Hispanic Students Compared to District Population

	Headcount	Percent	2010 Population
White	4,260	73%	81%
Asian/ Pacific Islander	308	5%	1%
African American	156	3%	3%
Native American	53	1%	2%
Multi-race/Other	270	5%	2%
Total	5,047	87%	89%

These are adults ages 18 to 64 enrolled in 2012-13, excluding current Running Start and International students.

Basic Skills Hispanic Students Compared to District Population

	Headcount	Percent	2010 Population
Hispanic or Latino (Any Race)	684	62%	11%
Not Hispanic	425	38%	89%
Total	1,109	100%	127,650

SVC enrolled 51 percentage points more basic skills Hispanic or Latino students than the community's population of Hispanic or Latino residents.



Basic Skills Non-Hispanic Students Compared to District Population

	Headcount	Percent	2010 Population
White	318	29%	81%
Asian/ Pacific Islander	56	5%	1%
African American	22	2%	3%
Native American	7	1%	2%
Multi-race/Other	22	2%	2%
Total	425	39%	89%

These are adults ages 18 to 64 enrolled in 2012-13, excluding current Running Start and International students.

Personal Goal-Seeking Hispanic Students Compared to District Population

	Headcount	Percent	2010 Population
Hispanic or Latino (Any Race)	183	11%	11%
Not Hispanic	1,454	89%	89%
Total	1,637	100%	127,650

SVC enrolled the same percentage of personal goal-seeking Hispanic or Latino students as the community's population of Hispanic or Latino residents.



Personal Goal-Seeking Non-Hispanic Students Compared to District Population

	Headcount	Percent	2010 Population
White	1,344	82%	81%
Asian/ Pacific Islander	19	1%	1%
African American	16	1%	3%
Native American	13	1%	2%
Multi-race/Other	62	4%	2%
Total	1,454	89%	89%

These are adults ages 18 to 64 enrolled in 2012-13, excluding Running Start and International students.